

totalokinawaTM

www.totalokinawa.com

April & May 2013

FREE
¥0

Shop 'til you drop
The best places in Okinawa to splurge!





SUNNY-NET

INTERNET SERVICE PROVIDER

DISCOUNT!!

Internet

Fiber Optic

1Gbps

NTT One Time Fee
¥4515
(24 Months Contract)

¥4515/Month

SAVE ¥21,525

FREE!!

Sunny Net

ISP

3 Months Free

Save
¥7500
(1 Year Contract)

¥2500/Month
(After 3 Months)

SAVE ¥7,500

FREE!!

TV

Fiber TV

TV Plan
45 Channels

Set Up Fee - FREE
2 Months - FREE

¥3150/Month*

SAVE ¥11,550

= ¥10,165

Fiber Phone

No Minimum Contract
INCOMING FREE
¥9/min to USA
¥8.4/3 mins Local
¥525/Month

= ¥10,690

UPGRADE to 1Gbps

FREE!



Google Map



SALES & BILLING

(098) 983-7770
Mon - Fri 10:00 - 18:00
Saturday 10:00 - 16:00
Closed on Suit & Japanese Holidays

www.sunny-net.ne.jp

Tel: 098-983-7770

*If you don't have fiber phone, it's an extra 475 yen for NTT home gateway
FREE for current Premium & Next Family Customers until 31 Jan 2013

SHOP

'TIL YOU DROP
The Shopping Issue

If you're feeling the need for some retail therapy, we've got a special this month on some great places to shop in Okinawa.

We've also included restaurant reviews from Marco Polo and Pizza In The Sky. Additionally we're featuring a review of Life Relaxation Salon. There's also our regular dive report and issue of Weird & Wonderful.

As usual you can also view the magazine online at:

www.totalokinawa.com



www.totalokinawa.mobi

Need a QR reader?

Check out our
magazine page on
Totalokinawa.com

10 FEATURE
SHOP 'TIL YOU DROPSHOP 'TIL YOU DROP
Pg.10

Marco Polo	4
Dive Report	6
Weird & Wonderful	9
Shop 'Til You Drop	10
Pizza In The Sky	13
Life Relaxation Salon	17

Published in Okinawa by Totalokinawa.com
All content is Copyright 2013. All Rights Reserved
For advertising information - www.totalokinawa.com
Totalokinawa and it's partners are not responsible for the
content of any external advertising.

**The Best Possible Service
To Meet Your Real Estate
Needs**

MY HOUSING

Ocean View Properties

Angkor Beach American Village

2-19-6 Chatan, Chatan-Cho
Email: info@my-housing.jp
Web: www.myhousingokinawa.com
Tel: 098-936-2968
Fax: 098-936-2962

**Beautiful Homes from
Tokuzato Housing**

**Houses
Apartments
Duplexes**

Tel: 098-956-2667
<http://www.tokuzato-hsg.jp/en>

by Melissa Nazario

Marco Polo

Marco Polo bakery and café in Awase is a great place to people watch, and get your bread fix at the same time.



Open for breakfast, lunch, and dinner, the café of 28 tables plus an outdoor patio provides a spacious atmosphere to watch the bustle of the bakery, and to smell the chocolate desserts and fresh bread being pulled out of the stone oven.

Breakfast is served from 8 am to 11:30, with options for sandwiches, French toast, and even soup. The lunch menu includes a new selection of four different pastas, a soup of the day, plus sandwiches, burgers (¥750—¥830), pizzas (¥1500), and a calzone (¥1200).

The 15 cm pizzas and 30 cm calzone each take about 20 minutes to cook. The generous portion of fresh creamy broccoli soup was perfect for the drizzly day, served with a scone and side of strawberry jam, though a basket of fresh bread was also an option. We did enjoy a basket of bread that came with sausage and vegetable pasta in tomato sauce, but the pasta dish, which included hot dogs for the sausages, was a bit disappointing—we expected more of an Italian sausage.

Juice, coffee, and sodas are also available (¥200), as well as draft beer (¥350) and wine by the bottle (¥1200). The caramel cappuccino (¥350) was medium-bodied, slightly sweet, not bitter at all. We'd like to try the latté (¥220) next time.

The established bakery is Marco Polo's gem, and attracts so many customers that a yellow line is taped around the checkout counter for when there's a flood of customers. The bakery offers a smorgasbord of tempting cakes, donuts, loaves of bread, and desserts, and even soups to go. The café's lunch menu can also be ordered to go, and we hear that late at night, many of the bakery items are offered at a discount, to make room for the next day's batch of goodies.

8:00 am to 9:00 pm daily

¥ and \$

098-921-1820

Google Map & Directions


<http://tiny.cc/marcopolo>


KING FURNITURE CO.

FINE HANDMADE ROSEWOOD FURNITURE, OKINAWA

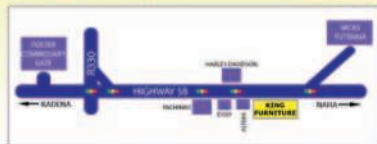
CUSTOM ORDER OK!



TEL:098-898-2743
OPEN: MON-SAT 10:00-19:00
SUN: 12:00-18:00



in totalokinawa.com
Directions, Opening Times, Maps & More



WWW.KINGFURNITUREOKINAWA.COM

SUNSHINE MONTESSORI SCHOOL

Our Mission:

- To allow children to discover the world around them.
- To help children realize their independence and natural abilities.
- To teach appropriate social skills and manners with their peers and adults.
- To nurture healthy life habits.

Enroll Today!

Openings Available for:

- Infants
- Toddlers
- Primary
- School-Age Summer Program

Come Experience the Joy of Learning at:

1-9-10 Kitamae Chatan Town, Okinawa 904-0117
(near Camp Foster and Aha Beach)

Phone: 098-936-9968 / 9971

www.sunshinemonteriosokinawa.com

www.totalokinawa.com

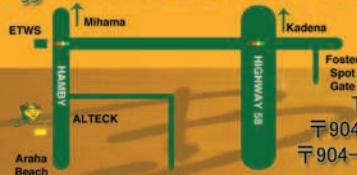


Mon & Tues
¥200 Draft!

BRAZILIAN BBQ
ブラジリアン パーベキュー
OKINAWA

Weds Ladies
¥2500 Dinner!

Buffet Lunch & Dinner - Meat Served at Your Table - Brazilian Buffet



Late Brazilian Time
Available for Celebrations

Tel: 098-989-5934 Fax: 098-989-5936
〒904-0116 沖縄県 中頭郡北谷町 北谷 1-12-7
〒904-0116, Okinawa, Chatan-Cho, Chatan 1-12-7
www.bovinos-okinawa.com



in totalokinawa.com
Directions, Opening Times, Maps & More

Spring Diving - Coming Soon!

Spring is just around the corner and the dive season is about to really get rolling. Time to shake the dust off your dive gear and get wet. A quick equipment check before getting in is required.

1. Inflate your BC, make sure it holds air and the inflator is not sticking.
2. Check mask and fin straps for wear and replace if necessary.
3. Ensure tanks have a current hydro and visual inspection.
4. Inspect regulators for wear on mouthpieces and hoses. Ensure that regulators are not free flowing and breathing smoothly. Check second stages to be sure they are free of any debris or dust.
5. If there are any doubts about the functionality of your gear bring it in for professional servicing.

After checking your gear, it's time to ensure that your dive skills are up to par with a few



easy dives off the beach. Alternatively, take advantage of the free refresher offered with all boat dives during the month of April and May on Reef Encounters dives to the Keramas and surrounding dive sites. If you are an experienced diver and looking to make diving more than a hobby, professional level courses are being offered this month for divemaster and instructor, contact Reef

Encounters for details. Instructor courses are open to all agency divemasters and have very flexible schedules, so your busy work or military schedule will not conflict with your training. Come make some extra money this summer teaching others to do what you love to do.

Reef Encounters will also be offering up adventure dives starting at the end of April for those experienced divers looking for something different. We will be exploring the sea mounts south of the Keramas hunting for large pelagics and drifting the channels of the Keramas looking for sharks. We will also be looking for members of the Okinawa wreck divers team which will be working on locating and mapping the wrecks of the USS Longshaw, LST 447, the Midori Maru and others around Okinawa. Many of these dives will require advanced and technical certifications, classes are being offered now to qualify you to join these expeditions.

Contact us now to schedule your course or trip at info@reefencounters.org!

www.reefencounters.org 098-995-9414



m.totalokinawa.com/1b



**Pizza Buffet
With Ocean Views**

**All You Can Eat
Pizza, Curry & More!
Large Veranda
Room for Parties**

Oceans Pizza




Oceans Pizza is located in the Alivila Hotel area of Yomitan alongside the East China Sea just off Route 6

All U Can Eat ¥980!




Oceans Pizza
www.oceanspizza.com
Open Everyday
For Lunch & Dinner
098-958-7711

m.totatokinawa.com/af
Directions, Opening Times, Maps & More

NOW ORDER ONLINE!

Pizza in




www.okinawapizza.com

Food to Make You Smile!

**All You Can Eat
Buffet ¥980**

**Delivery to Sunabe Area
Free Fries With
Online
Orders!**

098-936-7060



★ Over 300 Cars Across Two Lots
★ Convenient Locations
★ Over 40 Years In Business

Johnny's Used Cars

★ Up To 24 Months Financing
★ With Zero Interest
★ NO Down Payment
★ 1 Year Limited Warranty

www.johnnys-cars.com



Camp Foster (Main Office)
Tel: 098-983-0312
Gate 1 (Satellite Office)
Tel: 098-921-7318



Our Main Office is conveniently located right outside of Foster's Legion Gate

Our Branch Office is located just outside Kadena Gate 1 next to Family Mart.

Google Map

LOOKING FOR YOUR NEXT OPPORTUNITY?

**Guaranteed
Income in the
First Year up to
\$33,000.00***
for qualified applicants with an
Earning Potential of
**\$80K to \$100K
or More!!**

*Are you confident,
determined and
ambitious and ready
to take charge of
your earnings? If so,
then contact us for
an interview.*



*Must meet eligibility requirements. All guarantees are based on applicant's ability and sales potential as determined by ENCS at time of interview and throughout sales training.

Exchange New Car Sales (www.encls.com) is currently looking for professional sales agents who would like to work in Mainland Japan, Okinawa or Korea. We offer training pay and guaranteed income for the first year at a minimum of \$33,000. Potential Commissions are unlimited. Paid travel expense/reimbursement, medical insurance and other benefits are available. We have a world class training program so no sales experience is necessary but is always helpful. This position is located on U.S. Military installations so applicants must be able to pass a 10 year background check for a security clearance.

Interested?



Need a Place to stay?

We have a wide selection of beautiful houses, apartments and duplex for you.

We are located in Okinawa City just off Gate2 Street and a friendly English speaking agency.

Monday-Friday 9:00AM - 6:00PM

Saturday 9:00AM - 3:00PM

TEL: (098)937-1985

www.sunrisehousingokinawa.com

Email: sunrisehousingokinawa@gmail.com



Okinawa



USO Okinawa
Until Everyone Comes Home®
www.usookinawa.org



Weird and Wonderful Japan

Dreamliners still out of action

* As Japanese airlines were some of the first customers for delivery of the 787, in particular ANA, the grounding of the Dreamliner is having a particularly heavy effect in Japan. ANA has cancelled over 3600 flights through to the end of May. ANA is now operating under the assumption that the 787 will not fly until at least the beginning of June. Hopefully that's not too optimistic.

Strange death in Okinawa

* On March 12, an elderly resident was discovered lying on the ground with blood pouring from his neck in the Nishihara area of Okinawa. What's strange is that some kind of power saw was close to the scene along with fishing equipment. Police are trying to work out whether it was foul play or a sad accident where he lost control of the saw and severed his own neck.

Japan gives Canada \$1 Million

* Just after the anniversary of the March 11 tsunami, the Japanese government has given \$1 million to Canada to aid in the clean up of tsunami debris washed up along the Canadian coast.

URUMA LAWN CARE

Cut, Trim, Hedges, Trees and Landscaping

www.lawninokanawa.com

or call 080-3739-8834 (VM 973-7625)

Serving OFF-BASE or on from Okinawa City to
Kadena, Kitanakagusuku, Onna, Yomitan, Uruma

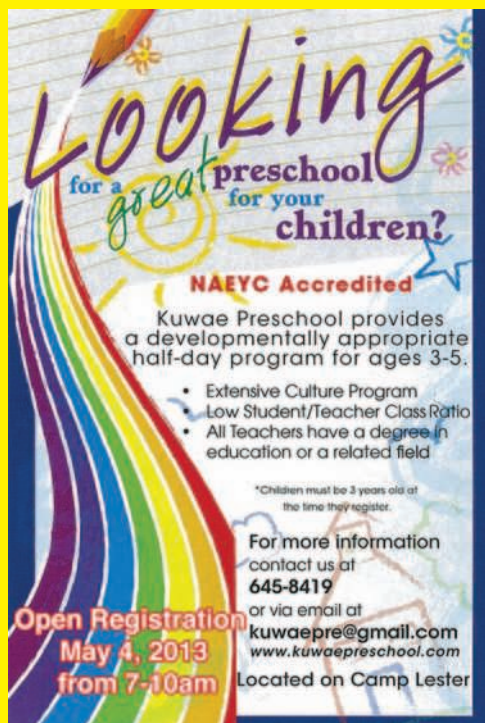


Anniversary of Iwo Jima Battle

* The 68th anniversary of the battle for Iwo Jima was marked on March 13 in a joint memorial service with America and Japan. The battle claimed 6821 American and 21,570 Japanese lives. The island, now called Ioto in Japanese is now uninhabited apart from a small Japanese military outpost.

10 yen coin stops bullet train

* A bullet train scheduled to depart from Tokyo was delayed and then replaced when a conductor dropped a 10 yen coin into the accelerator lever housing. The 1,100 passengers were asked to disembark as the coin couldn't be retrieved. A very expensive problem caused by a very small coin!



Looking
for a **great** preschool
for your **children?**

NAEYC Accredited

Kuwae Preschool provides
a developmentally appropriate
half-day program for ages 3-5.

- Extensive Culture Program
- Low Student/Teacher Class Ratio
- All Teachers have a degree in education or a related field

*Children must be 3 years old at the time they register.

For more information
contact us at
645-8419
or via email at
kuwae@pre@gmail.com
www.kuwae@preschool.com

Open Registration
May 4, 2013
from 7-10am

Located on Camp Lester

Shop 'til you drop

The best places in Okinawa to splurge!

Do you enjoy shopping, like to keep up with the latest? We've got three shopping centers in Naha for you.



Ashibanaa Outlet Mall, just off the Airport expressway exit toward Senaga island, is an outdoor American-style shopping center with more than 70 internationally famous brands, like Michael Kors, Ocean Pacific, Levi Strauss, and Coach.

While some claim that the merchandise is discounted by 30%

or more, you really have to look for bargains (Levi's was expensive), and the best deals we found were at The Gap

and some of the clearance sections in Adidas.



Kids will love the displays and play area at the Sylvanian Families store. Go for a bit more selection and sizing than you'd find elsewhere on island.

Hours: 10 am – 8 pm

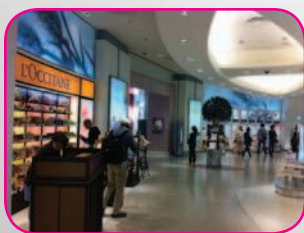
Google Map & Directions



GOOGLE MAP

<http://tiny.cc/ashibinaa>

If you're leaving the country and have cash to burn (or just want to window shop), be sure to check out DFS Galleria on 330 in Naha.



This upscale shopping plaza features designers like Armani, Prada, Gucci, and Louis Vuitton, plus a whole wing dedicated to fragrance and cosmetics like Mac and Kiehl. DFS's boutiques have the latest trends in fashion, an amazing atmosphere, and even a bar and eatery.

fashion trends, or just prefer to try on before you buy?
ou to check out and get your "retail therapy" fix.

You can only purchase there if you're leaving the country soon, though. Bring your flight itinerary and passport and pay at the Galleria. Then on the day of your flight, take your

Google Map & Directions

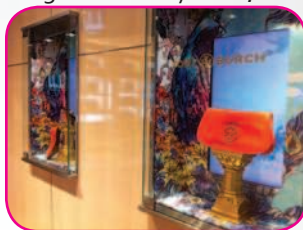


COOULE MAP

receipt and pick up your loot at the DFS counter in Naha Airport's international terminal after check in and security.

Hours: 9am - 9pm

<http://tiny.cc/dfsokinawa>



Just a block down from DFS Galleria is Naha Main Place, a more mid-level shopping center akin to San A, and open really late. In addition to shoes and clothing shops, there are stores for eyeglasses, Japanese beauty products, socks, kids clothes, fabric and craft supplies, luggage, plus a grocery store, French bakery, flower shop, and even a Sanrio store, for Hello Kitty lovers.



Hours: 9:00 am to 12:00 am

Google Map & Directions



COOULE MAP

<http://tiny.cc/mainplace>



GLOBAL BROADBAND

www.glbjapan.co.jp



Tired of **SLOW** Internet?
Try GLBBs Super Fast
Fiber Optic Connections

USA Connect VPN

Access State side
media with our VPN



Need to call home?

Cheap calls worldwide
with GLBB's VOIP Server



Google Map

Kadena Gate 1

Foster
Commissary
Gate



Kajinho (Pizza in the Sky)

If you happen to be up North in the Motobu or Nago area, you've got to check out Pizza in the Sky at least once. While the pizza and limited menu draw mixed reviews from the public, one thing cannot be denied: its hilltop location offers lovely views of the Okinawan landscape and East China Sea.

There's a fair amount of tables both indoor and outdoor, but the place was so popular on the Saturday we went, that we did have to wait a good while on one of their benches overlooking the Okinawa vista. Once seated, our server presented us with the menus, which were paper fans listing a menu item in each fold—Japanese on one side, and English on the other.

People seem to be very opinionated about the pizza. The crust is slightly thick, with a little bit of chew to it, and there's lots of gooey cheese on top, which we liked, but others didn't care for, due to the flavor or the amount. A small, 7 inch pizza (¥1100) and a medium, 16 inch pizza (¥2100) are available. Toppings include pepperoni, bacon, onion, corn, and green pepper, and the price doesn't change based on the number of toppings you order.

Aside from pizza, we enjoyed the house salad (¥500), a good sized bowl of lettuce, red onions, shredded carrot, cucumbers, and corn in a light, tangy vinaigrette. One bowl was enough for two or three people. Several freshly squeezed juices (¥400), including orange and guava, are also offered, and are quite refreshing, but seem a little steep in price for the half glass offered, so keep that in mind. For dessert, we all shared chunks of mango in a sweet syrup (¥500). Some of the

chunks were still frozen in the middle, which were a little too chilly for when we went, but would be refreshing on a summer day.

Open from 12:00 - 19:00 (Last Order 18:30). Closed Tuesday & Wednesday

1153-2 Yamazato, Motobu-cho

¥ only

098-047-5537

Google Map & Directions



<http://tiny.cc/pizzasky>



Bill's Yard Care

On Base Services

Free on site or phone estimates

Prices start from \$20

Serving Kadena, Shields & Chibana Housing Areas

www.okinawalawncare.com

Tel: 080-6493-5211



CUSTOM TEE SHIRTS

Dri Fit, Sports Shirts, Hoodies... YOU NAME IT!

www.ultragraphicjapan.com

contact@ultragraphicjapan.com



898-5009 **ULTRA* GRAPHIC**
1044-9137-09

American Sizes Cheap Prices
Will Travel to Northern Bases

K and K

Motorbike Emissions
& Brake Testing

090-1947-8655 English

090-8290-3504 Japanese



www.okinawabike.com

INKSPIRATIONS

Let us help you find yours.



**CUSTOM TATTOOS
BY MELISSA**

5 minutes from Kadena Gate 2 in Okinawa City.

www.inkspirationstattoookinawa.com



Saint Josephine Montessori

Friendly New School Close to Camp Kinser

www.saintjosephinemontessori.com

school@saintjosephinemontessori.com

Tel: 098-878-5623 Cell: 090-9784-6962

PANA MONEY EXCHANGE

Great Rates On Yen/Dollar

Exchange!

Check Out Today's Rate:

www.okinawayenexchange.com

098-923-0016

Naval Kadena



BOLLYWOOD Dreams

Authentic Indian Curry & Grill

Lunch Sets
From ¥980

Open Everyday:
11am - 10pm

Tel: 098-926-0977

www.bollywood-dreams.jp



DAVE'S DUCK AND DIVE

**OKINAWA PADI INSTRUCTOR
ALL SKILL LEVELS**

www.davesduckndive.com

dave@davesduckndive.com

Tel: +81 90-8523-2803



JAPAN FAMILY HOUSING

HELPING YOU FIND YOUR PERFECT OKINAWA HOME



contact@japanfamilyhousing.com
www.japanfamilyhousing.com
Tel: 098-933-8112
Fax: 098-933-8117
1-9-37 Kubota, Okinawa City



ITALIANO

Delicious Pizza, Pasta & Doria



Tel: 098-936-7611
Open - Lunch & Dinner
Closed Tuesday
italiano-okinawa.com

White River Photo Studio

Family Package ¥11,550

Includes:
5K Photo (2), 8x10 Photo (1)
5 Wallet Sized Photos
5 Postcard Photos
Costume & Makeup Fee:
¥1050 - ¥4200 per person
(Tax Included Weekdays Only)

Tel: 098-939-2880
Open 10am - 7pm
Closed Sunday




www.whiteriverphotostudio.com

Little Angels Preschool

New Preschool Now Open In Sunabe Minutes From Gate 1



www.littleangelsokinawa.com
Sunabe, Chatan
098-923-1229




Pats Sats

SATELLITE COMMUNICATIONS

AMERICAN OWNED AND OPERATED
PROFESSIONAL WORKMANSHIP
SPECIALIZED IN SATELLITE INSTALLATION & REPAIR
FAST SERVICE ON INSTALLATIONS & REPAIRS

15 YEARS OF EXPERIENCE
GUARANTEED WORK
NO HIDDEN FEES OR CHARGES

★★★★ Services ★★★★★

- Full Install**
(Customer supplies all materials)
- House Special**
(We supply all materials except the decoder and dish)
- Monster Deal**
(Includes everything except decoder)
- Initial Satellite Positioning & decoder setup**
- Multiple rooms**

Hours: 10 AM - 8 PM
7 days a week
Office: 098-936-3244 Fax: 098-963-7702
Email: contact@patsats.com

Online Appointment
www.Pats-Sats.com
go to Request Appointment

★★★★ Your Satellite Hook Up! ★★★★★

Ambrosia

アンブロージア
Beauty & Relaxation

Tel: 098-989-3620



Aromatherapy Massage

- ★ First time customers get 10% off
- ★ Special 20% off in your birthday month

60 Mins Full Body Course ¥5,000
120 Mins Total Course (Body & Facial) ¥9,000
45 Mins Maternity Course ¥3,500

Couples Massage Available
(Friday & Saturday Only)

*Eyelash Curl
Permanent Makeup
Aromatherapy Massage
Rejuvenation Facials*



Permanent Makeup

★ Special ¥3000 off permanent makeup for eyebrows

Eyebrows

¥28,000

Upper Eyeliner

¥20,000

Lower Eyeliner

¥18,000



"Ambrosia Beauty Salon Okinawa"
Find Us On Facebook!

www.okinawabeautysalon.com
Open 11:00 - 20:00
Closed Sundays & 4th Monday
\$ and Credit Cards OK!



MILITARY USED
CAR SALES

TEL: 098-936-6563

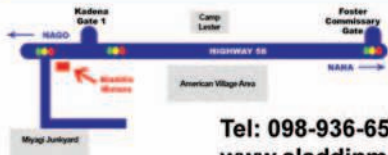
ALADDIN MOTORS

Large Selection of Quality Used Cars for Great Prices



Best Used Cars - Lowest Prices - Free Junking - De-Registration
No Down Payment - No Credit CHECK - JCI & Towing

1 Minute from
Kadena Gate 1



Tel: 098-936-6563

www.aladdinmotors.info



Google Map

Life Relaxation Salon

The hustle and bustle of our often jam packed schedules makes it easy to forget that we need to take time to relax and recharge.



Vacations are great, if you have the budget and enough time to get away. Usually, though, just a little self-care will do the trick, and there are lots of spas and salons here in Okinawa offering the perfect little getaway to relieve stress and rejuvenate.

Life Relaxation Salon in Sunabe is one shining example, providing a range of services, including body massage, facials, and even IPL permanent hair removal. There

are differently priced beauty courses to accommodate different budgets and schedules, and like any good spa, they do consultations before starting to recommend services that best suit your needs and skin type.

We recommend trying one of Life's Ryukyu facial packages, which last from 30 to 80 minutes, and adding on one of three masks (which take and extra 20 minutes or so), tailored to oily/acne prone, combination, or dry skin. The cold CO₂ mask is their most popular and good for combo skin; it causes blood vessels to supply more oxygen to skin cells and boosts cell regeneration. The results? Tighter pores and noticeably smoother, softer skin. A heads up: things like the facial steamer (which made it a little difficult to breathe), the little suction device to clear pores, and plastic wrap placed over the eyes and mouth during the mask treatment may take a little getting used to, but the outcome, including the refreshed feeling afterward, is absolutely worth it.

By appointment only Hours: 10:00 am – 7:00 pm

Website: www.lifeokinawa.com

278 Sunabe, Chatan-Cho

¥ only

098-936-4062

Google Map & Directions



<http://tiny.cc/liferelax>



more photos : www.totalokinawa.com



**Get 5 Minutes FREE
at Master Sun
With This Coupon**

Excludes Services Requiring
Pre-Appointment. Please
Show This Coupon and
Valid for Adults



Ambrosia Tel: 098-989-3620
Beauty & Relaxation

For Aromatherapy Massage

- ★ First time customers get 10% off
- ★ Special 20% off in your birthday month
- For Permanent Makeup
- ★ Special ¥3000 Discount for eyebrows



**Oceans Pizza
& Pizza In**

Get ONE Small French
Fries with every group
OR
Free Fries with Online
Orders!

www.totalokinawa.com & www.okinawapizza.com
(Limited to one coupon per group/order)

TOMA'S GARAGE

**2000 Yen Discount
Coupon
(For Services Over
20,000 Yen)**

Cash Payment Only Exp. 31 May 13
One Time Only

Tel: 098-956-0691
Car Repair & Insurance
www.tomasgarage.com



**White River
Photo Studio**

Get One Extra 5x7
Print With the Family
Package
(Frame Extra)

Totalokinawa Magazine Coupon
Please Cut Or Print and take to Shop
www.whiteriverphotostudio.com



**10% Discount at
Hearth Cafe**

Totalokinawa Magazine Coupon
Please Cut Or Print and take to
Restaurant
Valeo Heart Cafe Sunabe
www.hearth-cafe.com



Bovino's
Ask About Our
Great Yen/Dollar
Rates!

www.bovino-okinawa.com



Try Bamboo Cafe Chicken - 3 Jerk Chicken Pieces Free!
www.bamboocafeokinawa.com



**BRAND NEW
HOUSES from**

Seaside Housing

95% of our houses are within
walking distance of a beach!

Telephone: 098-936-0202 www.seasidehousing.jp



Are you Looking for House?
Please Check Our Official Website.

Tel 098-939-5121
<http://www.centralhousingokinawa.com>



BELLA CLAUDIA

LADIES IMPORTED CLOTHING

DRESSES - LINGERIE - COSTUMES

First 100 Customers
3 Month 10% Discount!

* Discount Card With First Purchase

Depot Island Close
To Sunset Beach
Tel: 098-989-8878
www.bellaclaudia.com

Google Map



Register Online For News & Events!

DISCOVER OKINAWA'S BEST INTERNATIONAL DANCERS

LADIES FREE ENTRY ON THURSDAY
LADIES NIGHT THURSDAY

DEJA VU
GENTLEMEN'S CLUB

TUES-SUN 7PM-1AM
BEAUTIFUL INTERNATIONAL DANCERS
DAILY SPECIALS
WWW.DEJAVUGENTS.COM

WADA MUSIC TOWN
GATE 1-10
KABA GATE 2

totalokinawa.com
Directions, Opening Times, Maps & More

CHI CHI'S GENTLEMEN'S CLUB

Okinawa, Japan
www.chichisgents.com

OPPOSITE CAMP FOSTER COMMISSARY GATE

OKINAWA'S MOST BEAUTIFUL DANCERS
Open Tuesday - Sunday

Camp Foster Commissary Gate 5
HIGHWAY 36
Chatan
Lawson

totalokinawa.com
Directions, Opening Times, Maps & More

www.chichisgents.com

www.okinawawebdesign.com
contact@okinawawebdesign.com

Okinawa Web
Design

NEED a website?

**NO
SET UP
FEES!***

Websites - ¥9900/mth ~

Includes domain name, email, hosting & more

Website Hosting - ¥1095/mth ~

Already got a website? Move to our private hosting
Free transfer assistance

Domain Email - ¥290/mth ~

Get your own .com & email. Look more professional!

E-Commerce Store - ¥5500*/mth ~

Want to sell online? Add an e-commerce store
to your website. *With website

*Mention this advert to receive offer. Monthly fee via Paypal or Bank Transfer


Moon Ocean
GINOWAN
HOTEL & RESIDENCE



<http://www.moonoceanginowan.jp>

Luxury Living In Ginowan

Hotel rooms with kitchen or long stay residence